

Standard Features & Components

- Widths
- 4', 6', & 8'
- Projection
- 3'
- Height
- 1'
- Brake-Formed
- One-Piece Awning Deck
- .090 Seamless Aluminum
- Aluminum Face Closed-Ends
- 2" x 2" Integrated Gutter
- Powder Coat or Paint
- White, Black, or Bronze
- Other colors on request
- Custom Specs and Configurations Available
- Made in the USA

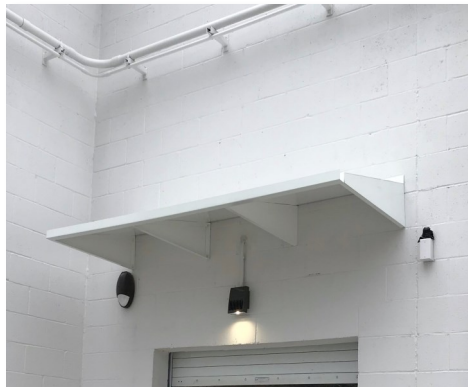
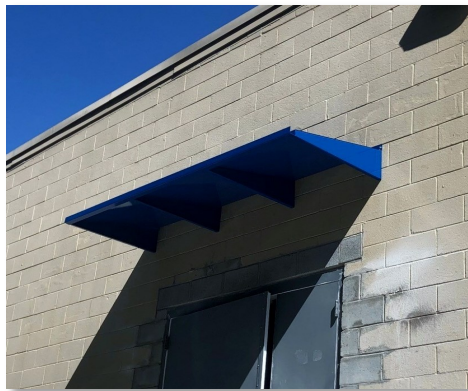
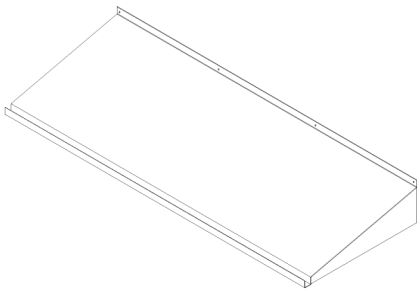
Metal Utility Awning

ASC's metal utility awnings offer a cost-effective and durable upgrade from the typical fabric awning. Our metal utility awnings provide form and function, with an updated modern look. While best suited for commercial and industrial applications, these awnings can also be used anywhere a traditional fabric awning would go.

Built as an aluminum one-piece seamless structure, our metal utility awnings are lightweight and low maintenance. We offer a wide selection of standard and non-standard paint or powder coat finishes to ensure this product has a high-quality and long-lasting finish to meet your project's specific needs.

Regardless of the project at hand, our metal utility awnings require simple attachments and can be mounted to either new construction sites or existing buildings. Our awnings come in three standard widths, and can be mounted together in sections for projects that require widths greater than eight feet.

Metal Utility Awning



Locations:

ASC IN (Headquarters)

340 Hoosier Dr.
Angola, IN 46703
(260) 665-1521

ASC FL

1710 Industrial Dr., Suite 5
Edgewater, FL 32132